

# Your business is only as good as the quality of data that can be leveraged

Issued by [AfriGIS](#)

8 Nov 2016

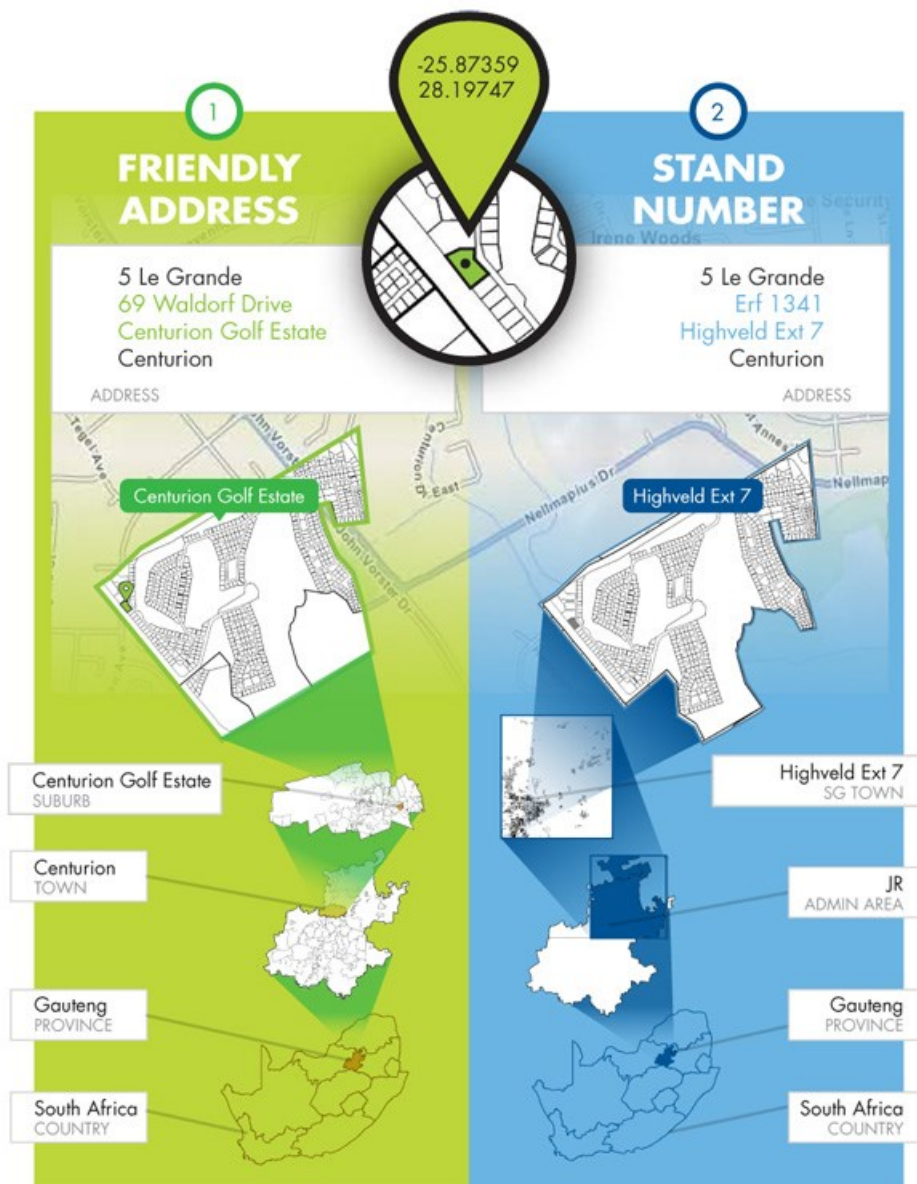
Due to the country's history there are different sets of boundaries fulfilling different purposes. Unfortunately this can cause substantial challenges in master data management.

AfriGIS enables you to make sense of all the data puzzle pieces on the table.

## **Errors or inconsistencies in Master Data can result in:**

- missed business opportunities
- increased cost of compliance
- delayed production times
- supply chain inefficiencies
- ineffective marketing campaigns
- revenue loss
- inaccurate business decisions
- dissatisfied customers
- etc...

**Here's why one address has multiple answers and causes headaches to the most seasoned of data quality managers**



Because linking different datasets benefit different end-uses



Your Master data accuracy ensures the quality of your end-results and services

[Contact us](#) to see how our toolsets and data can assist in completing your data puzzle.

- **Beyond borders – AfriGIS develops verified geospatial data for Africa** 30 May 2024
- **AfriGIS's Peter Smythe appointed to GeoServer Project Steering Committee** 14 May 2024
- **Location intelligence is the secret weapon of data-driven banking** 13 Mar 2024
- **A GIS leap forward in the customer journey** 28 Feb 2024
- **What are you looking for?** 14 Feb 2024

#### AfriGIS



We create ONE OF A KIND GEOSPATIAL SOLUTIONS. We use geospatial information science to bring information about WHERE to life across industries and in any application. This helps our clients unlock value through better business intelligence.

[Profile](#) | [News](#) | [Contact](#) | [Twitter](#) | [Facebook](#) | [RSS Feed](#)

For more, visit: <https://www.bizcommunity.com>